

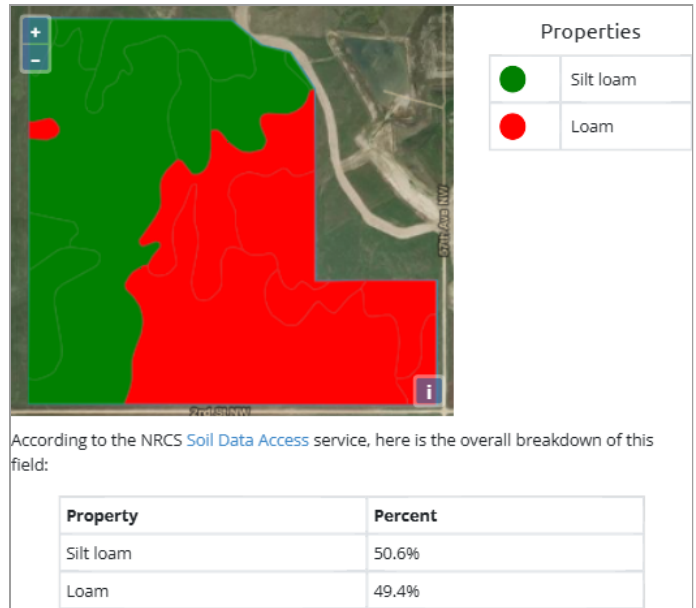
# Product Trial Report

GROWER DETAILS	FIELD DETAILS	PLANTING/HARVEST DETAILS	Total Acre Final Report
<b>Grower:</b>	<b>Total Acres:</b> 292.48	<b>Crop:</b> Canola	<b>Report Date:</b> 01/26/2025
<b>City &amp; State:</b> Beulah, ND	<b>Soil Type:</b> Please see Soil Type Map	<b>Plant Date:</b> 05/10/2024	<b>Harvest Year:</b> 2024
<b>Zip Code:</b> 58523	<b>Tile:</b> No Tile	<b>Row Spacing:</b> 7.5	<b>Crop:</b> Canola
	<b>Irrigation:</b> None	<b>Planting Depth:</b> 0.75	<b>Trial Name:</b> Soil Boost Trial (Year 2 of 3 Year Trial)
	<b>Fall Tillage:</b> Vertical/Min Till	<b>Harvest Date:</b> 08/12/2024	<b>Trial Type:</b> Preplant
	<b>Spring Tillage:</b> No Till		
	<b>Previous Crop:</b> Spring Wheat		

## Field Map



## Soil Type



## Planting Map

No Data Found

## Trial Zones



# Product Trial Report

## Yield Results Data

### High Level Yield Heat Map



This data was filtered based on  $-2 / +2.5$  St Dev

Yield Summary BPA	
<i>Location</i>	<i>Yield</i>
Soil Boost Trial	17.16
Control	16.6
<b>Yield Response</b>	0.56

Yield Values	
●	9.2 - 12.9
●	12.9 - 15.6
●	15.6 - 17.8
●	17.8 - 21.5
●	21.5 - 26.5

# Product Trial Report

## **Product Trial Comments:**

This trial is Year 2 of a 3 year study on reclaimed mining ground using Soil Boost. This canola plot had a +0.56 bushel/acre yield response using the -2/+2.5 Standard Deviation measurement method to tighten yield data points. No planting mapping was available, it was confirmed that the same variety was planted across the entire study

## **Penetrometer Readings**

- **6/12/24 Results (30 DAP)** - Using small tip on penetrometer. **Trial** - average depth = 8 inches, **Control** - average depth = 5 inches
- **7/14/24 Results (60 DAP)** - Penetrometer hit 300 psi before breaking the surface due to ground being hard due to lack of rain

## **Application Date and Details:**

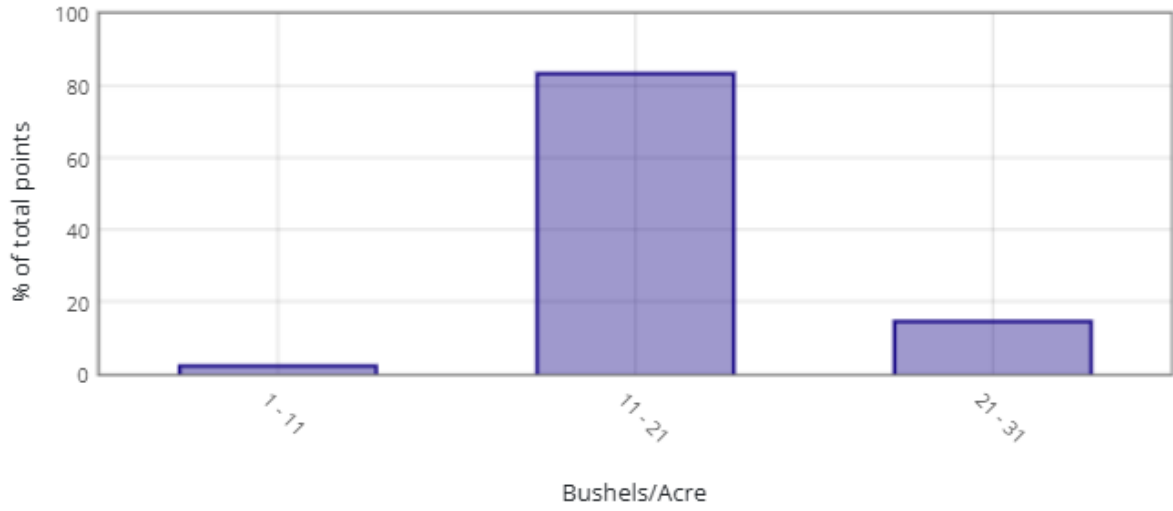
**Application Date:** 4/13/24

**Application Method:** Broadcast

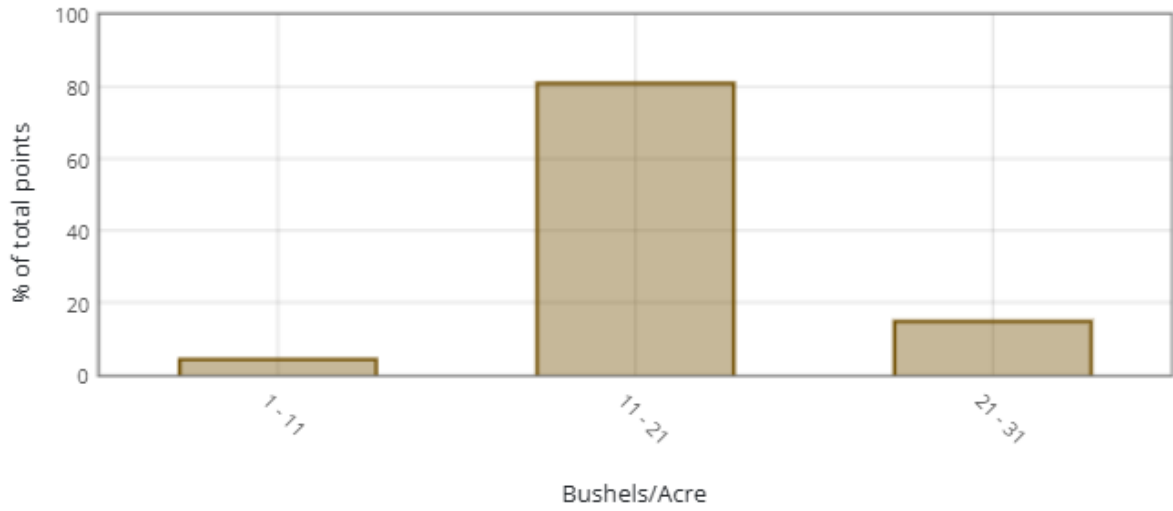
**Product Application Rate/Acre:** Soil Boost = 150 lbs.

# Product Trial Report

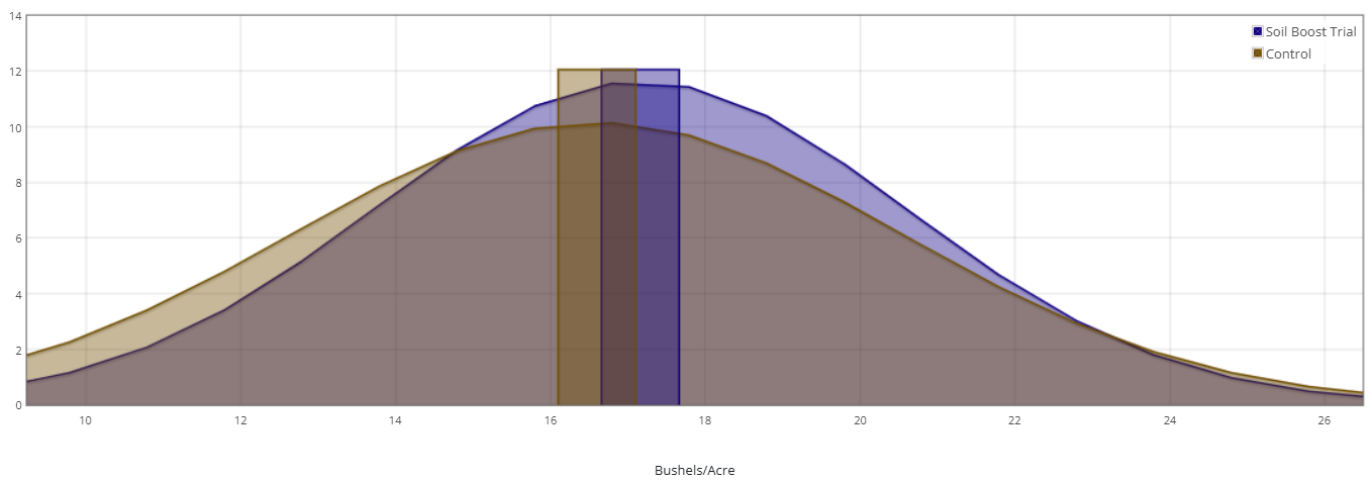
## Soil Boost Trial



## Control



## Normal Curve Distribution



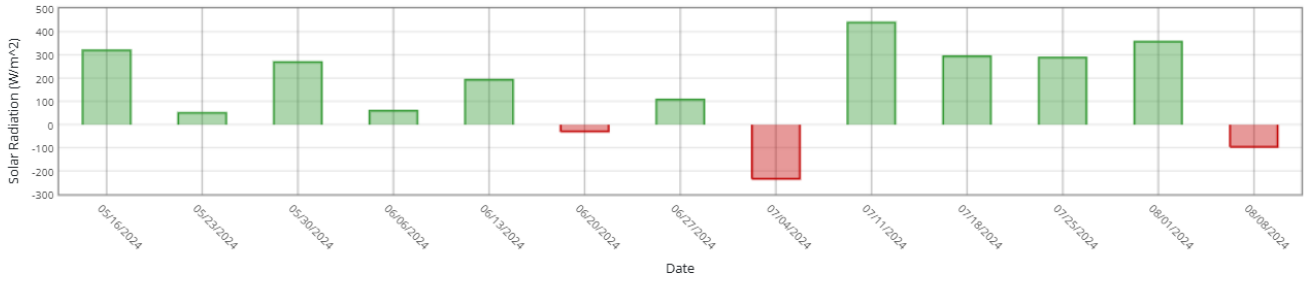
# Product Trial Report

## Trial Location Weather Data vs 5 Yr Avg

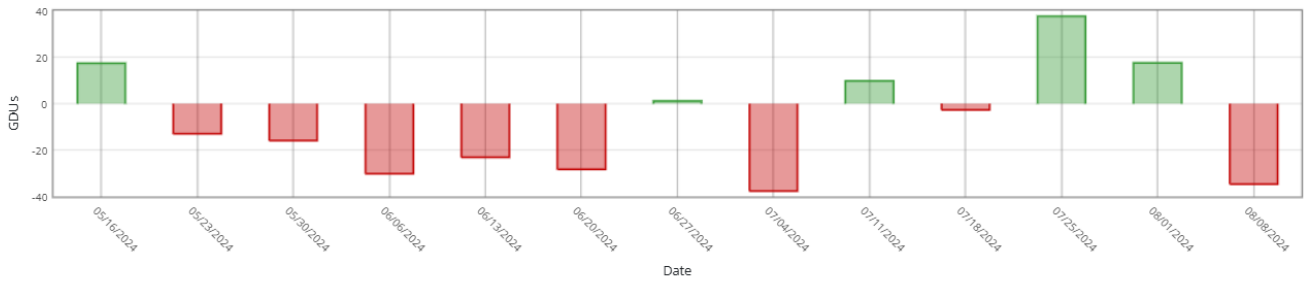
Historical Averages based on past  years

Cumulative  Week over Week

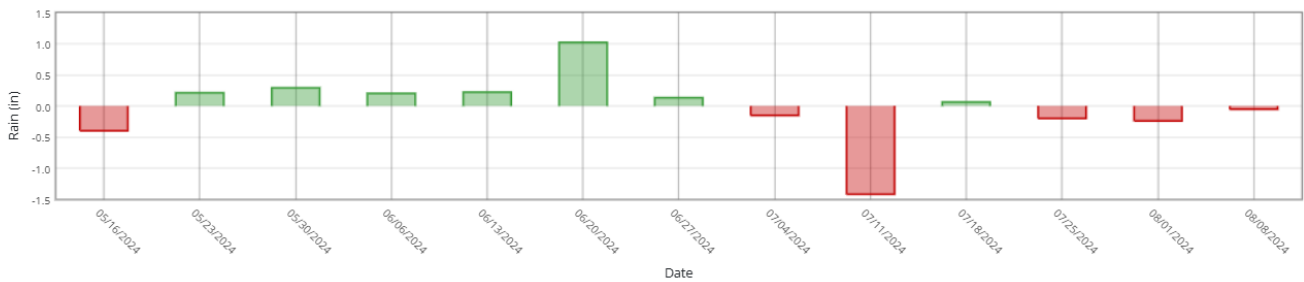
### Sunlight



### Heat (GDUs)



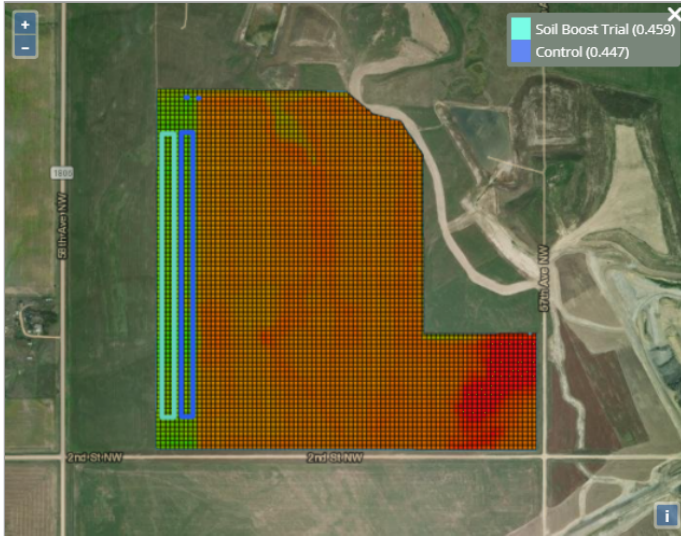
### Rain



# Product Trial Report

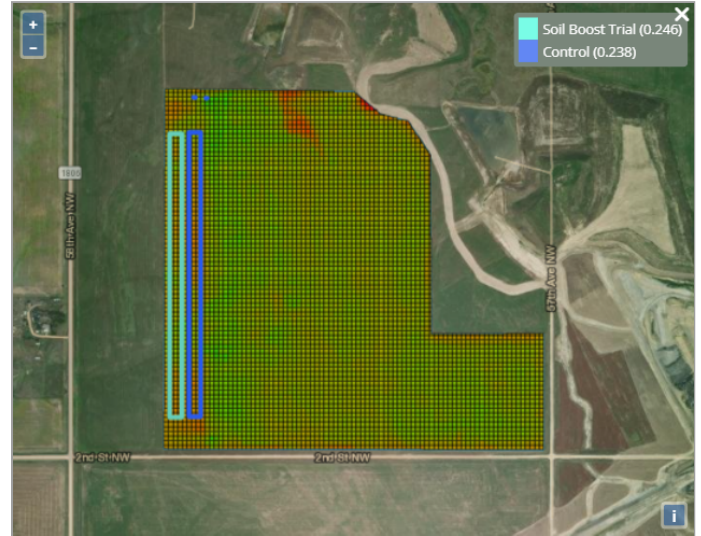
## Additional References

Satellite Imagery - 06/19/2024 - Trial: SoilBiotics Soil Boost - NDVI Green



This satellite imagery (NDVI Green) is used to measure plant health and chlorophyll production markers. This imagery taken 5 weeks post planting shows that the Soil Boost location is +2.7% to the Control which is a positive reading for this measurement

Satellite Imagery - 08/03/2024 - Trial: SoilBiotics Soil Boost - NDVI Green



This imagery taken 9 days before harvest shows that the Soil Boost location is now +3.36% better than the Control